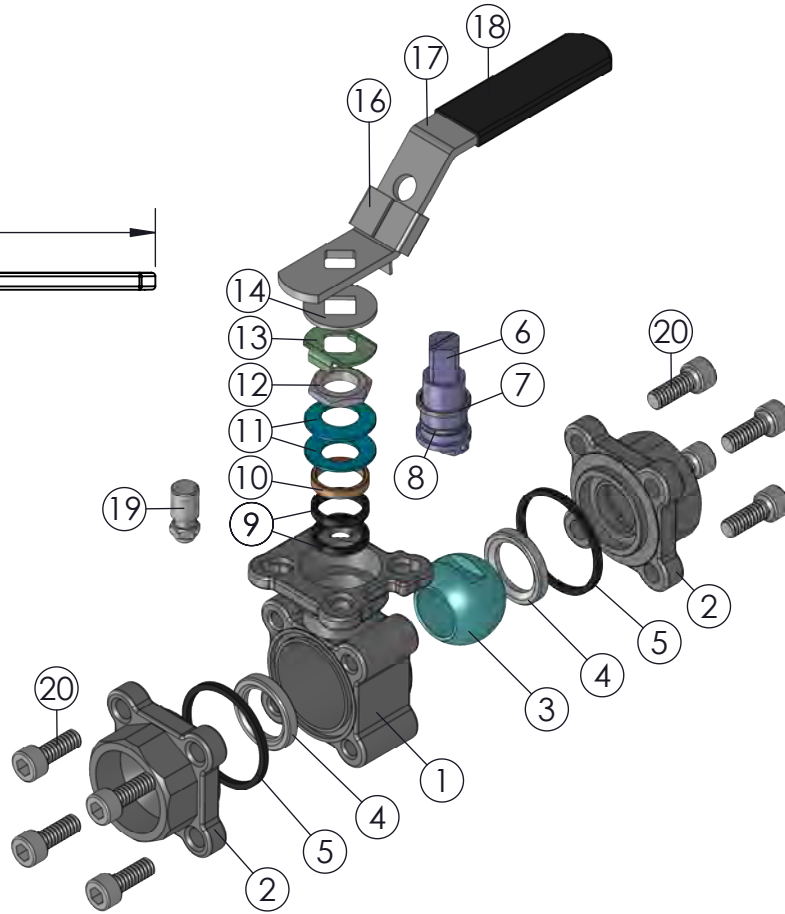
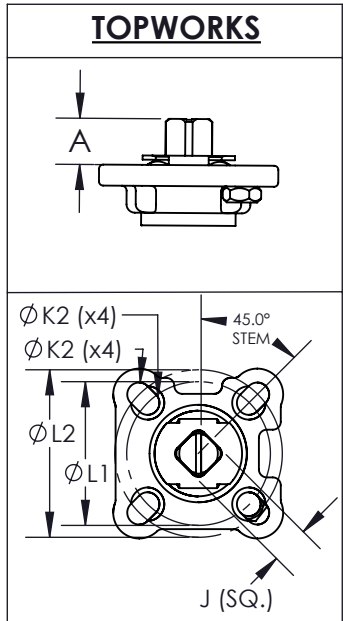
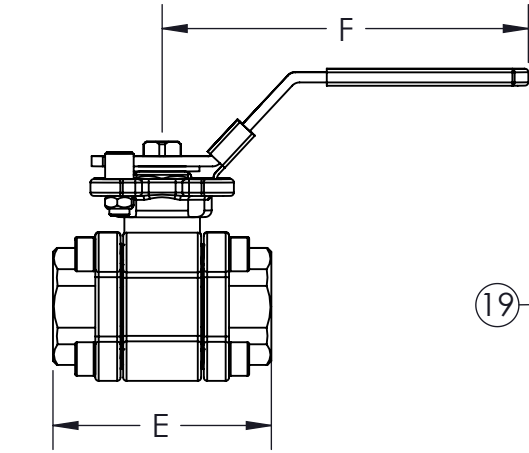
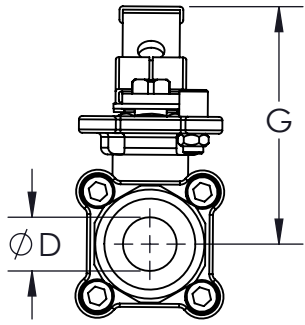
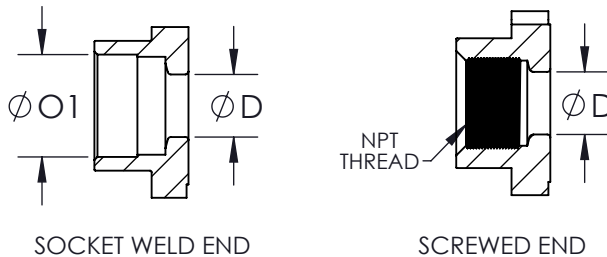


* AT FULL DIFFERENTIAL PRESSURE FOR CLEAN FLUIDS WITH TFM1600 SEATS

| SIZE | A | øD | E | F | G | J | øK1 | øK2 | øL1 | øL2 | øO1 | FNPT THREAD | ISO 5211 | WEIGHT (lbs) | Cv | TORQUE* (in-lbf) | BODY BOLT SIZE |
|--------|-----------|-----------|------------|------------|------------|-----------|----------|----------|-----------|-----------|-----------|----------------|----------|--------------|----|------------------|----------------|
| 1/2" | 0.43 (11) | 0.51 (13) | 2.36 (60) | 4.61 (117) | 2.68 (68) | 0.35 (9) | - | 0.24 (6) | - | 1.42 (36) | 0.87 (22) | 1/2"-14NPT | F03 | 1 | 8 | 37 | M6-1.0 X 16 |
| 3/4" | 0.43 (11) | 0.63 (16) | 2.56 (65) | 4.61 (117) | 2.83 (72) | 0.35 (9) | 0.24 (6) | 0.24 (6) | 1.42 (36) | 1.65 (42) | 1.06 (27) | 3/4"-14NPT | F03-F04 | 1 | 11 | 67 | M6-1.0 X 16 |
| 1" | 0.55 (14) | 0.79 (20) | 2.95 (75) | 5.00 (127) | 3.11 (79) | 0.43 (11) | 0.24 (6) | 0.24 (6) | 1.42 (36) | 1.65 (42) | 1.34 (34) | 1"-11.5NPT | F03-F04 | 2 | 21 | 104 | M8-1.25 X 20 |
| 1-1/2" | 0.47 (12) | 1.26 (32) | 3.94 (100) | 6.69 (170) | 3.46 (88) | 0.43 (11) | 0.24 (6) | 0.28 (7) | 1.65 (42) | 1.97 (50) | 1.97 (50) | 1-1/2"-11.5NPT | F04-F05 | 5 | 57 | 164 | M10-1.5 X 25 |
| 2" | 0.63 (16) | 1.50 (38) | 4.33 (110) | 7.17 (182) | 4.13 (105) | 0.55 (14) | 0.28 (7) | 0.35 (9) | 1.97 (50) | 2.76 (70) | 2.44 (62) | 2"-11.5NPT | F05-F07 | 8 | 80 | 213 | M10-1.5 X 30 |



END CONFIGURATIONS:



PRODUCT INFORMATION:

1. END CONNECTIONS AVAILABLE IN: SCREWED (FNPT), SOCKET WELD
2. SERVICES INCLUDE: OXYGEN CLEANING, DEGREASING, VENT/RELIEF HOLE
3. BALL IS VENTED ON THE STEM SLOT AREA
4. ANTI-STATIC DEVICE
5. STANDARD LOCKING HANDLE
6. ENCAPSULATED BODY SEALS
7. BLOW OUT PROOF STEM
8. ALL STAINLESS STEEL PASSIVATED
9. COMPLETE DIRECT MOUNT VALVE AUTOMATION

APPLICABLE STANDARDS:

1. ASME B16.34: DESIGN
2. API 598: INSPECTION AND TESTING
3. ISO 5211: MOUNTING
4. ANSI B1.20.1: NPT
5. ANSI B16.11: FORGED STEEL FITTINGS, SOCKET-WELDING
7. USP CLASS VI: CONFIRMATION OF COMPLIANCE (TFM1600/PTFE MATERIAL)
8. ANSI CLASS 600 RATING APPLIES TO 1/2" - 2" R9 VALVES WITH TFM1600 SEATS

| ITEM NO. | DESCRIPTION | MATERIALS | QTY. |
|----------|--------------------|---------------------|------|
| 1 | BODY | A351-CF8M A216-WCB | 1 |
| 2 | END | A351-CF8M A216-WCB | 2 |
| 3 | BALL | A351-CF8M | 1 |
| 4 | SEAT | TFM1600 DELRIN PEEK | 2 |
| 5 | BODY SEAL | PTFE BUNA GRAFOIL | 2 |
| 6 | STEM | AISI-316 | 1 |
| 7 | STEM THRUST WASHER | TF4215 | 1 |
| 8 | O-RING | VITON | 1 |
| 9 | STEM SEAL | TF4215 | 2 |
| 10 | GLAND FOLLOWER | 304 STAINLESS STEEL | 1 |
| 11 | BELLEVILLE WASHER | 301 STAINLESS STEEL | 2 |
| 12 | JAM NUT | 304 STAINLESS STEEL | 1 |
| 13 | LOCK TAB | 304 STAINLESS STEEL | 1 |
| 14 | SPACER | 304 STAINLESS STEEL | 1 |
| 15 | HANDLE NUT | 304 STAINLESS STEEL | 1 |
| 16 | LOCKING DEVICE | 316 STAINLESS STEEL | 1 |
| 17 | LEVER HANDLE | 304 STAINLESS STEEL | 1 |
| 18 | HANDLE SLEEVE | PVC | 1 |
| 19 | STOP PIN | 304 STAINLESS STEEL | 1 |
| 20 | BODY BOLT | 304 STAINLESS STEEL | 8 |

| | |
|---------------------|--------------------|
| DRAWN BY C.L. | DATE 11/20/2017 |
| CHECKED BY E.P. | DATE 01/08/2019 |
| APPROVED BY J.S. | DATE 01/08/2019 |

(FOR REF ONLY IF NOT APPROVED)

THE INFORMATION CONTAINED IN THIS DRAWING IS THE SOLE PROPERTY OF SVF FLOW CONTROLS, INC. ANY REPRODUCTION IN PART OR IN WHOLE WITHOUT THE WRITTEN CONSENT OF SVF FLOW CONTROLS, INC. IS PROHIBITED.

PROJECTION THIRD ANGLE

SVF Flow Controls
 5595 Fresca Drive • La Palma, CA 90623 • 1.800.783.7836
 www.SVF.net • Sales@SVF.net

DESCRIPTION:
1/2" - 2" R9 3-PIECE BALL VALVE, STANDARD PORT

UNITS: INCH (MILLIMETERS) DATE: 01/08/2019 REV: C