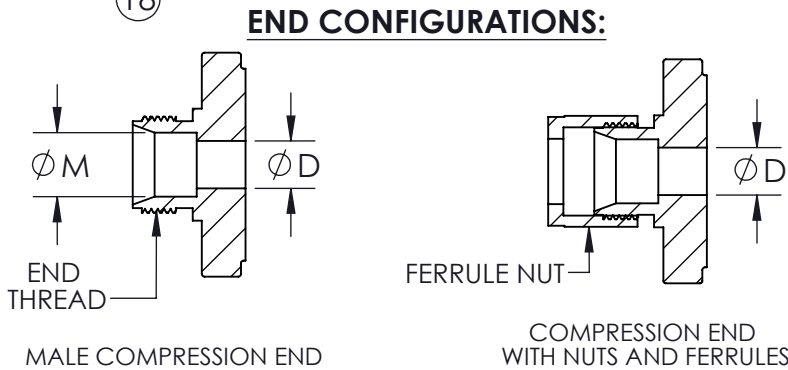
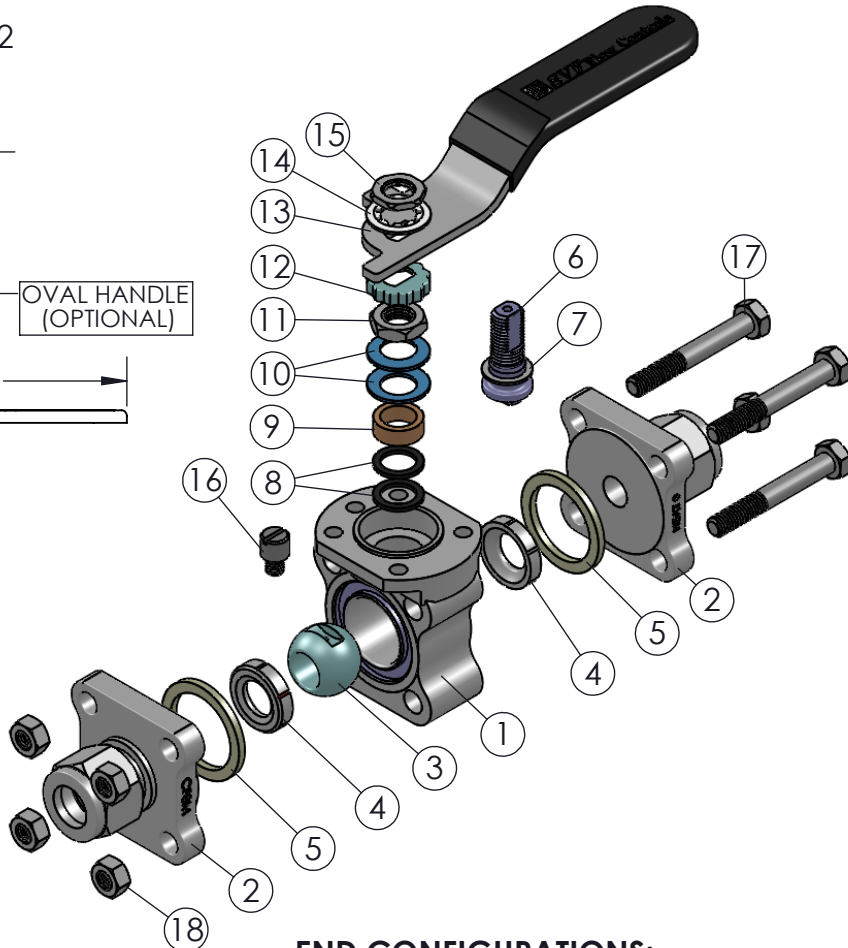
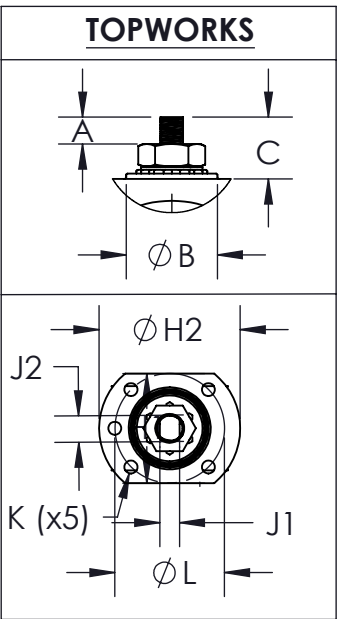
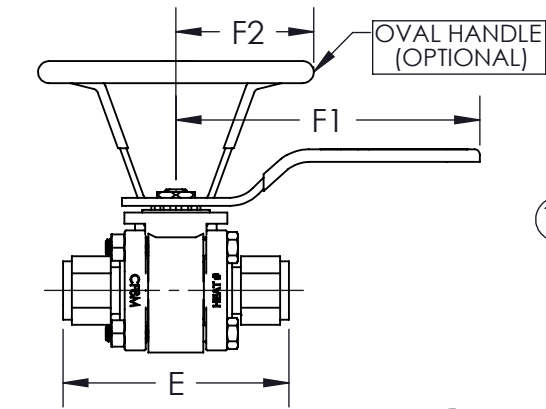
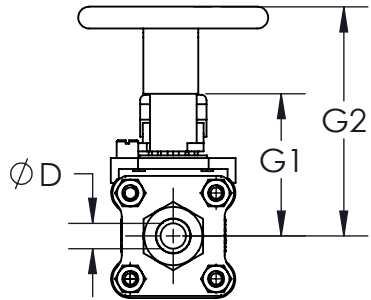


* AT FULL DIFFERENTIAL PRESSURE FOR CLEAN FLUIDS WITH TFM1600 SEATS

SIZE	A	øB	C	øD	E	F1	F2	G1	G2	H1	øH2	J1	J2	K	øL	øM	END THREAD	ISO 5211	WEIGHT (lbs)	Cv	TORQUE* (in-lbf)	BODY BOLT SIZE	BODY NUT SIZE
1/4"	0.21 (5)	1.0 (25)	0.37 (9)	0.26 (7)	3.03 (77)	5.0 (127)	2.0 (48)	1.8 (46)	3.2 (82)	1.5 (38)	1.8 (46)	0.22 (6)	0.37 (9)	M5-0.8	1.42 (36)	0.25 (6)	7/16"-20	F03	2	3	45	M6-1.0 X 45	M6-1.0P
3/8"	0.21 (5)	1.0 (25)	0.37 (9)	0.38 (10)	3.11 (79)	5.0 (127)	2.0 (48)	1.8 (46)	3.2 (82)	1.5 (38)	1.8 (46)	0.22 (6)	0.37 (9)	M5-0.8	1.42 (36)	0.38 (10)	9/16"-20	F03	2	5	45	M6-1.0 X 45	M6-1.0P
1/2"	0.21 (5)	1.0 (25)	0.37 (9)	0.51 (13)	3.35 (85)	5.0 (127)	2.0 (48)	1.8 (46)	3.2 (82)	1.5 (38)	1.8 (46)	0.22 (6)	0.37 (9)	M5-0.8	1.42 (36)	0.50 (13)	3/4"-20	F03	2	8	45	M6-1.0 X 45	M6-1.0P
3/4"	0.23 (6)	1.0 (25)	0.37 (9)	0.76 (19)	3.74 (95)	5.0 (127)	2.0 (48)	1.9 (48)	3.3 (84)	1.5 (38)	1.8 (46)	0.22 (6)	0.37 (9)	M5-0.8	1.42 (36)	0.75 (19)	1"-20	F03	2	12	45	M6-1.0 X 50	M6-1.0P
1"	0.34 (9)	1.2 (30)	0.70 (18)	1.01 (26)	4.53 (115)	6.0 (152)	2.0 (48)	2.4 (61)	3.7 (94)	1.7 (43)	2.1 (53)	0.30 (8)	0.43 (11)	M5-0.8	1.65 (42)	1.00 (25)	1-5/16"-20	F04	4	32	100	M8-1.25 X 65	M8-1.25P



PRODUCT INFORMATION:

1. END CONNECTIONS AVAILABLE IN: MALE COMPRESSION AND COMPRESSION WITH NUTS AND FERRULES
2. SERVICES INCLUDE: OXYGEN CLEANING, DEGREASING, VENT/RELIEF HOLE, HIGH CYCLE STEM KIT, AND VACUUM & SEARCHING GAS STEM KIT
3. BALL IS VENTED ON THE STEM SLOT AREA
4. ALL STAINLESS STEEL PASSIVATED
5. LIVE-LOADED STEM SEAL
6. BLOW OUT PROOF STEM
7. COMPLETE VALVE AUTOMATION

OPTIONS:

1. OVAL HANDLE
2. LOCKING DEVICE
3. ISO STEM EXTENSION
4. ANTI-STATIC DEVICE

APPLICABLE STANDARDS:

1. ASME B16.34: DESIGN
2. API 598: INSPECTION AND TESTING
3. ISO 5211: MOUNTING
4. CGA G-4.1: CLEANING FOR OXYGEN SERVICE
5. USP CLASS VI: CONFIRMATION OF COMPLIANCE (TFM1600/PTFE MATERIAL)

ITEM NO.	DESCRIPTION	MATERIALS	QTY.
1	BODY	A351-CF8M	1
2	END	A351-CF3M	2
3	BALL	A351-CF8M	1
4	SEAT	TFM1600 DELRIN UHMWPE PEEK	2
5	BODY SEAL	PTFE UHMWPE BUNA "N" VITON EPDM GRAFOIL	2
6	STEM	A276-316 A564-630	1
7	STEM THRUST WASHER	SUPRALON DELRIN PEEK UHMWPE	1
8	STEM SEAL	SUPRALON	2
9	GLAND FOLLOWER	304 STAINLESS STEEL	1
10	BELLEVILLE WASHER	17-7 PH STAINLESS STEEL	2
11	JAM NUT	304 STAINLESS STEEL	1
12	LOCK TAB	304 STAINLESS STEEL	1
13	LEVER HANDLE	304 STAINLESS STEEL	1
14	SERRATED LOCK WASHER	304 STAINLESS STEEL	1
15	HANDLE NUT	304 STAINLESS STEEL	1
16	STOP PIN	304 STAINLESS STEEL	1
17	BODY BOLT	304 STAINLESS STEEL	4
18	BODY NUT	304 STAINLESS STEEL	4

DRAWN BY E.P. DATE 05/22/2017
 CHECKED BY E.G. DATE 03/22/2018
 APPROVED BY J.S. DATE 03/22/2018
(FOR REF. ONLY IF NOT APPROVED)

SVF Flow Controls
 5595 Fresca Drive • La Palma, CA 90623 • 1.800.783.7836
 www.SVF.net • Sales@SVF.net

DESCRIPTION:
 1/4" - 1" LB 3-PIECE INSTRUMENTATION BALL VALVE

UNITS: INCH (MILLIMETERS) DATE: 03/22/2018 REV: C

UNITS: INCH (MILLIMETERS) DATE: 03/22/2018 REV: C