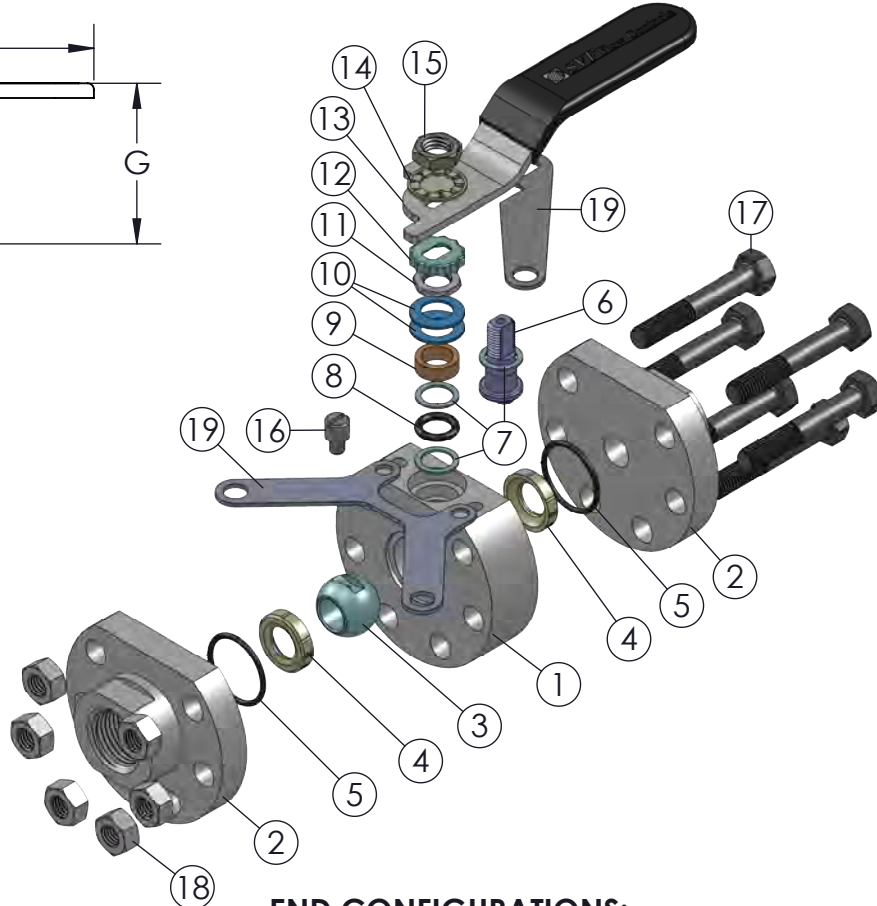
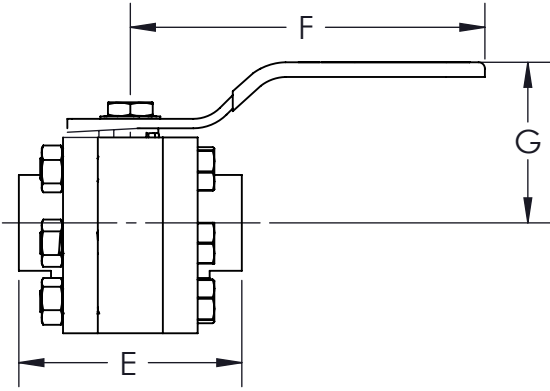


*AT FULL DIFFERENTIAL PRESSURE FOR CLEAN FLUIDS WITH DELRIN SEATS.

SIZE	A	øB	C	øD	E	F	G	H1	H2	J1	J2	K	L1	L2	øN1	N2	øN3	NPT THREAD	PER SAE J1926 THREAD	WEIGHT (lbs)	Cv	TORQUE* (in-lbf)	BODY BOLT SIZE	BODY NUT SIZE
1/2"	0.18 (5)	0.74 (19)	0.44 (11)	0.44 (11)	2.79 (71)	5 (127)	1.8 (46)	0.81 (21)	1.78 (45)	0.22 (6)	0.37 (9)	M5-0.8	1.34 (34)	N/A	0.86 (22)	0.44 (11)	1.18 (30)	1/2"-14NPT	3/4"-16-8	3.5	8	60	M8-1.25 X 50	M8-1.25P
3/4"	0.18 (5)	0.91 (23)	0.44 (11)	0.56 (14)	3.42 (87)	5 (127)	1.9 (48)	0.97 (25)	2.03 (52)	0.22 (6)	0.37 (9)	M5-0.8	1.32 (33)	0.59 (15)	1.07 (27)	0.56 (14)	1.61 (41)	3/4"-14NPT	1-1/16"-12-12	5.3	12	200	M8-1.25 X 60	M8-1.25P
1"	0.28 (7)	1.05 (26)	0.67 (17)	0.82 (21)	4.01 (102)	6 (152)	2.4 (61)	1.25 (32)	2.40 (61)	0.30 (8)	0.43 (11)	M5-0.8	1.64 (42)	0.94 (24)	1.33 (34)	0.56 (14)	1.93 (49)	1"-11.5NPT	1-5/16"-12-16	9.9	32	300	M10-1.5 X 80	M10-1.5P

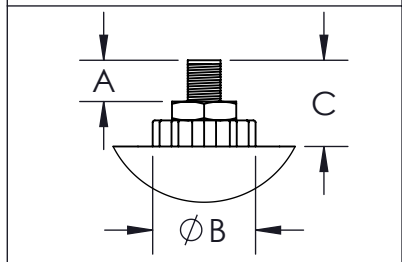


PRODUCT INFORMATION:
 1. END CONNECTIONS AVAILABLE IN: SCREWED ENDS (FNPT), SOCKET WELD ENDS, SCREWED ENDS PER SAE SPECIFICATION (J1926), SCREWED END (FNPT) X SOCKET WELD END, SCREWED END (SAE) X SOCKET WELD END, COMPRESSION MALE FITTINGS AND COMPRESSION NUT AND DOUBLE FERRULE ENDS
 2. SERVICES INCLUDE: HIGH CYCLE STEM KIT, VENT/RELIEF HOLE (UPSTREAM SIDE) AND HIGH PRESSURE GAS SERVICE
 3. BALL IS VENTED ON THE STEM SLOT AREA
 4. ALL STAINLESS STEEL PASSIVATED
 5. MOUNTING KIT AVAILABLE FOR COMPLETE VALVE AUTOMATION

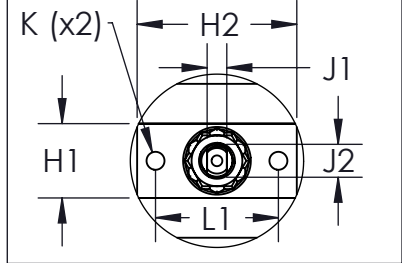
OPTIONS:
 1. LOCKING DEVICE
 2. ANTI-STATIC DEVICE

APPLICABLE STANDARDS:
 1. ASME B16.34: DESIGN
 2. ANSI B1.20.1: NPT
 3. API 598: INSPECTION AND TESTING
 4. CGA G-4.1: CLEANING FOR OXYGEN SERVICE
 5. ASME B16.11: FORGED STEEL FITTINGS/SOCKET WELDING

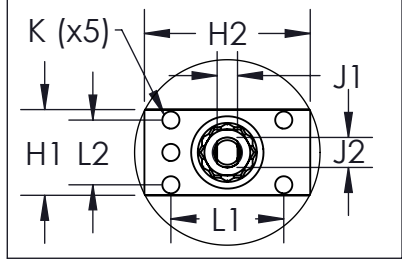
TOPWORKS



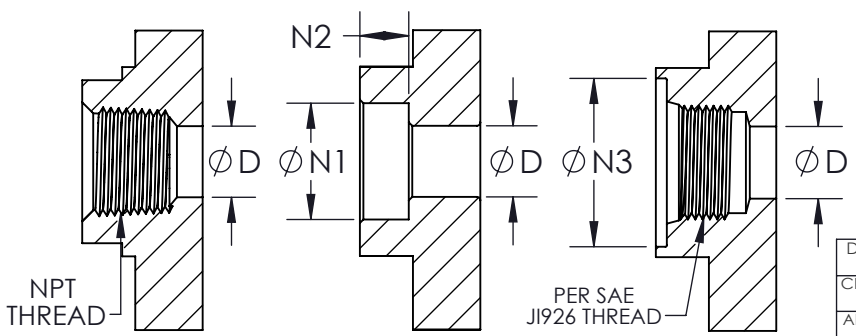
SIZE 1/2":



SIZES 3/4" - 1":



END CONFIGURATIONS:



SCREWED END SOCKET WELD END SAE END

ITEM NO.	DESCRIPTION	MATERIALS	QTY.
1	BODY	A351-CF8M A479-316L A216-WCB	1
2	END	A351-CF3M A479-316L A216-WCB	2
3	BALL	A564-630	1
4	SEAT	DELRIN PEEK	2
5	BODY SEAL	BUNA N VITON EPDM	2
6	STEM	A564-630	1
7	STEM THRUST WASHER	PEEK	3
8	STEM SEAL	BUNA	1
9	GLAND FOLLOWER	304 STAINLESS STEEL	1
10	BELLEVILLE WASHER	17-7PH STAINLESS STEEL	2
11	JAM NUT	304 STAINLESS STEEL	1
12	LOCK TAB	304 STAINLESS STEEL	1
13	LEVER HANDLE	304 STAINLESS STEEL	1
14	SERRATED LOCK WASHER (1" ONLY)	304 STAINLESS STEEL	1
15	HANDLE NUT	304 STAINLESS STEEL	1
16	STOP PIN	304 STAINLESS STEEL	1
17	BODY BOLT	316 STAINLESS STEEL	6
18	BODY NUT	316 STAINLESS STEEL	6
19	LOCKING DEVICE (OPTIONAL)	304 STAINLESS STEEL	2

DRAWN BY E.P. DATE 04/04/2017
 CHECKED BY E.G. DATE 09/27/2018
 APPROVED BY J.S. DATE 09/27/2018
(FOR REF ONLY IF NOT APPROVED)

PROJECTION THIRD ANGLE:

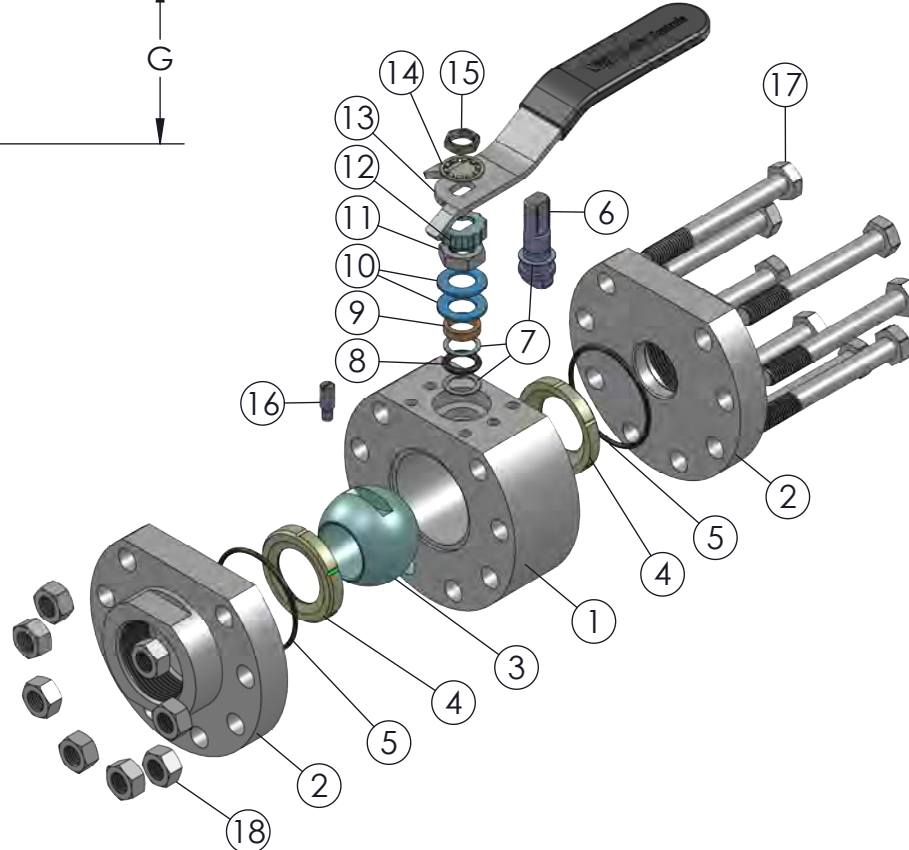
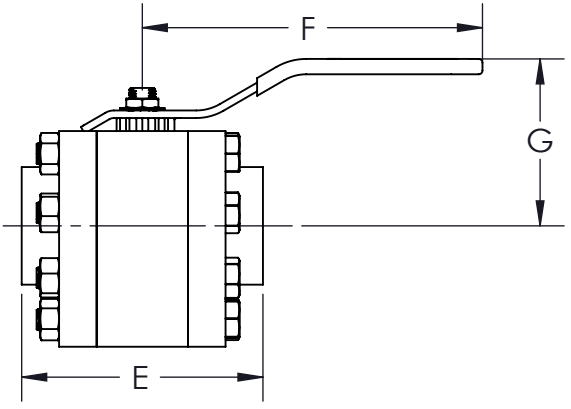
SVF Flow Controls
 5595 Fresca Drive • La Palma, CA 90623 • 1.800.783.7836
 www.SVF.net • Sales@SVF.net

DESCRIPTION:
 1/2" - 1" H7 3-PIECE HIGH PRESSURE BALL VALVE

UNITS: INCH (MILLIMETERS) DATE: 09/27/2018 REV: D

	A		B		C			D				E			F			G						
	SIZE	A	øB	C	øD	E	F	G	H1	H2	J1	J2	K	L1	L2	L3	øN1	N2	NPT THREAD	WEIGHT (lbs)	Cv	TORQUE* (in-lb)	BODY BOLT SIZE	BODY NUT SIZE
	1-1/2"	0.34 (9)	1.21 (30)	0.91 (23)	1.25 (32)	5.03 (128)	11 (279)	3.2 (81)	1.90 (48)	3.15 (80)	0.34 (9)	0.55 (14)	M6-1.0	1.55 (39)	1.41 (36)	1.85 (47)	1.92 (49)	0.56 (14)	1-1/2" - 11.5NPT	20.9	80	550	M12-1.75 X 100	M12-1.75P
	2"	0.34 (9)	1.21 (30)	0.91 (23)	1.50 (38)	5.64 (143)	11 (279)	3.3 (84)	2.22 (56)	3.69 (94)	0.34 (9)	0.55 (14)	M6-1.0	1.85 (47)	1.56 (40)	2.28 (58)	2.41 (61)	0.88 (22)	2" - 11.5NPT	28.9	104	1100	M12-1.75 X 110	M12-1.75P

* AT FULL DIFFERENTIAL PRESSURE FOR CLEAN FLUIDS WITH DELRIN SEATS.



PRODUCT INFORMATION:

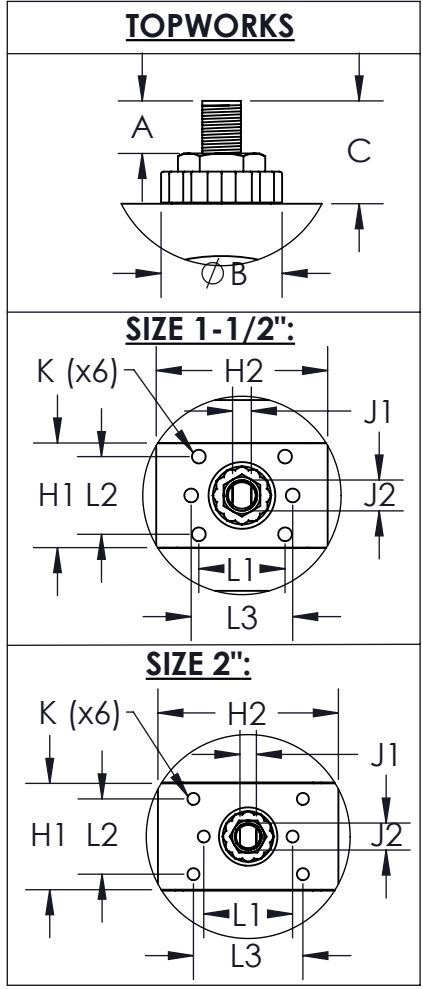
- 1. END CONNECTIONS AVAILABLE IN: SCREWED ENDS (FNPT), SOCKET WELD ENDS, SCREWED END (FNPT) X SOCKET WELD END
- 2. SERVICES INCLUDE: HIGH CYCLE STEM KIT, VENT/RELIEF HOLE (UPSTREAM SIDE) AND HIGH PRESSURE GAS SERVICE
- 3. BALL IS VENTED ON THE STEM SLOT AREA
- 4. ALL STAINLESS STEEL PASSIVATED
- 5. MOUNTING KIT AVAILABLE FOR COMPLETE VALVE AUTOMATION

OPTIONS:

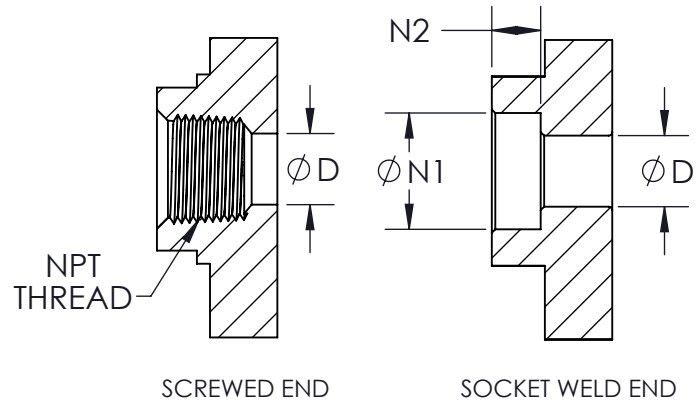
- 1. LOCKING DEVICE
- 2. ANTI-STATIC DEVICE

APPLICABLE STANDARDS:

- 1. ASME B16.34: DESIGN
- 2. ANSI B1.20.1: NPT
- 3. API 598: INSPECTION AND TESTING
- 4. CGA G-4.1: CLEANING FOR OXYGEN SERVICE
- 5. ASME B16.11: FORGED STEEL FITTINGS/SOCKET WELDING



END CONFIGURATIONS:



ITEM NO.	DESCRIPTION	MATERIALS	QTY.
1	BODY	A351-CF8M A479-316L A216-WCB	1
2	END	A351-CF3M A479-316L A216-WCB	2
3	BALL	A351-CF8M	1
4	SEAT	DELRIN PEEK	2
5	BODY SEAL	BUNA N VITON EPDM	2
6	STEM	A564-630	1
7	STEM THRUST WASHER	PEEK	3
8	STEM SEAL	BUNA	1
9	GLAND FOLLOWER	304 STAINLESS STEEL	1
10	BELLEVILLE WASHER	17-7PH STAINLESS STEEL	2
11	JAM NUT	304 STAINLESS STEEL	1
12	LOCK TAB	304 STAINLESS STEEL	1
13	LEVER HANDLE	304 STAINLESS STEEL	1
14	SERRATED LOCK WASHER	304 STAINLESS STEEL	1
15	HANDLE NUT	304 STAINLESS STEEL	1
16	STOP PIN	304 STAINLESS STEEL	1
17	BODY BOLT	316 STAINLESS STEEL	8
18	BODY NUT	316 STAINLESS STEEL	8
-	LOCKING DEVICE (OPTIONAL)	304 STAINLESS STEEL	2

DRAWN BY E.P. DATE 04/04/2017
 CHECKED BY E.G. DATE 09/27/2018
 APPROVED BY J.S. DATE 09/27/2018
(FOR REF. ONLY IF NOT APPROVED)
 THE INFORMATION CONTAINED IN THIS DRAWING IS THE SOLE PROPERTY OF SVF FLOW CONTROLS, INC. ANY REPRODUCTION IN PART OR IN WHOLE WITHOUT THE WRITTEN CONSENT OF SVF FLOW CONTROLS, INC. IS PROHIBITED.

SVF Flow Controls
 5595 Fresca Drive • La Palma, CA 90623 • 1.800.783.7836
 www.SVF.net • Sales@SVF.net

DESCRIPTION: 1-1/2" - 2" H7 3-PIECE HIGH PRESSURE BALL VALVE
 UNITS: INCH (MILLIMETERS) DATE: 09/27/2018 REV: D