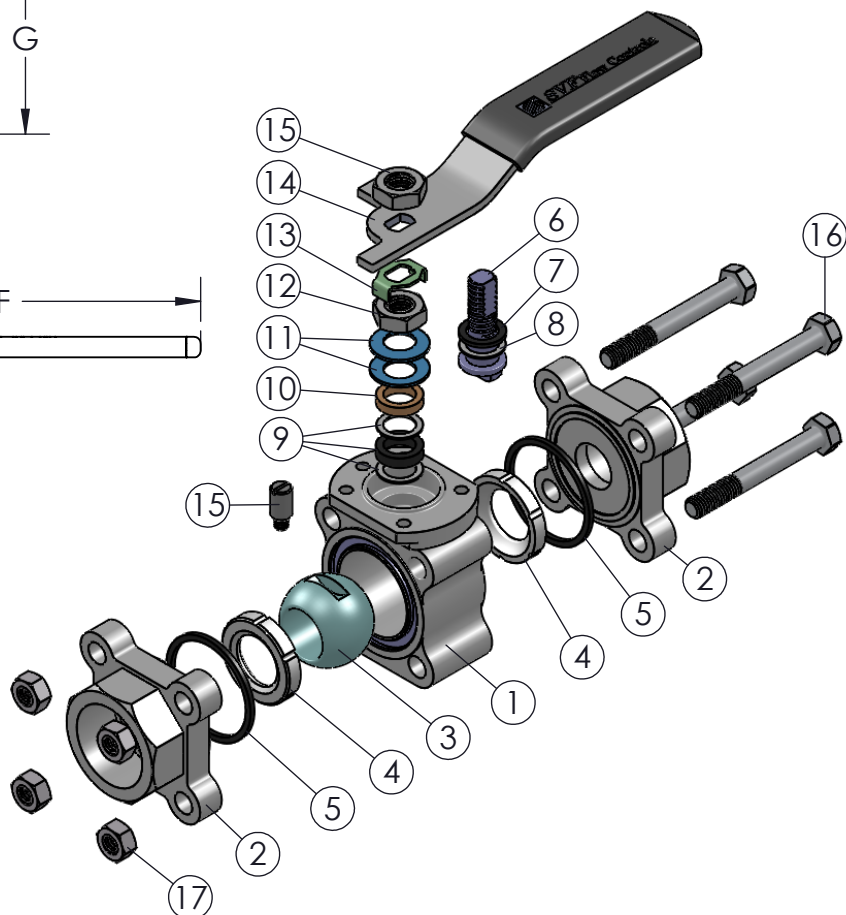
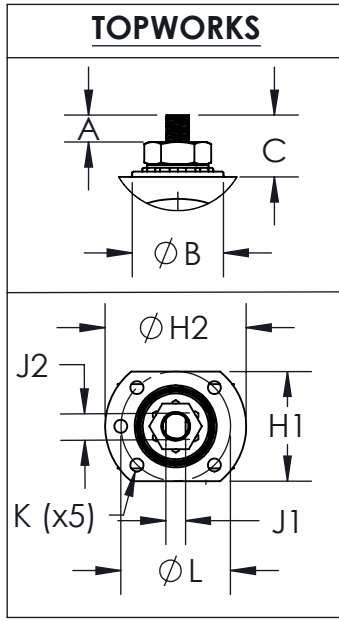
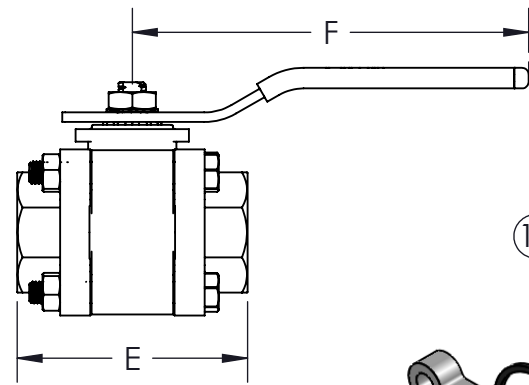
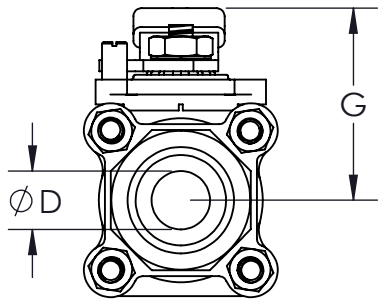
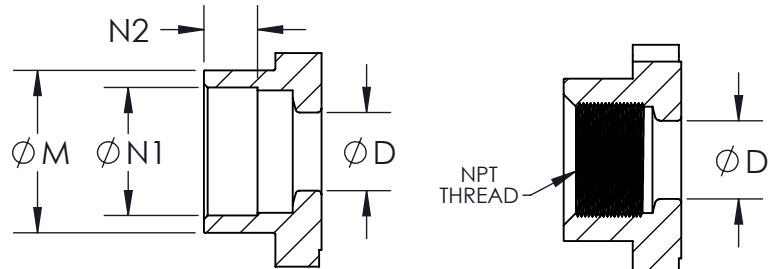


* AT FULL DIFFERENTIAL PRESSURE FOR CLEAN FLUIDS WITH TFM1600 SEATS

SIZE	A	øB	C	øD	E	F	G	H1	øH2	J1	J2	K	øL	øM	øN1	N2	NPT THREAD	ISO 5211	WEIGHT (lbs)	Cv	TORQUE* (in-lbf)	BODY BOLT SIZE	BODY NUT SIZE
1/2"	0.21 (5)	1.0 (25)	0.40 (10)	0.39 (10)	2.55 (65)	5.0 (127)	1.8 (46)	1.5 (38)	1.8 (46)	0.22 (6)	0.37 (9)	M5-0.8	1.42(36)	1.16 (29)	0.87 (22)	0.40 (10)	1/2"-14NPT	F03	1.8	5	45	1/4"-20 X 2"	1/4"-20
3/4"	0.23 (6)	1.0 (25)	0.40 (10)	0.59 (15)	2.85 (73)	5.0 (127)	2.0 (51)	1.5 (38)	1.8 (46)	0.22 (6)	0.37 (9)	M5-0.8	1.42(36)	1.18 (30)	1.06 (27)	0.44 (11)	3/4"-14NPT	F03	2.1	12	45	1/4"-20 X 2"	1/4"-20
1"	0.34 (9)	1.2 (30)	0.70 (18)	0.79 (20)	3.36 (85)	6.0 (148)	2.6 (66)	1.7 (43)	2.1 (53)	0.30 (8)	0.43 (11)	M5-0.8	1.65 (42)	1.42 (36)	1.34 (34)	0.51 (13)	1"-11.5NPT	F04	3.9	32	100	5/16"-18 X 2.6"	5/16"-18
1-1/2"	0.40 (10)	1.4 (36)	1.18 (30)	1.26 (32)	4.37 (111)	7.0 (183)	3.2 (82)	1.9 (48)	2.6 (66)	0.34 (9)	0.56 (14)	M6-1.0	1.97 (50)	2.13 (54)	1.93 (49)	0.51 (13)	1-1/2"-11.5NPT	F05	7.6	80	280	3/8"-16 X 3.4"	3/8"-16
2"	0.40 (10)	1.4 (36)	1.18 (30)	1.50 (38)	5.01 (127)	7.0 (183)	3.4 (87)	2.2 (56)	2.6 (66)	0.34 (9)	0.56 (14)	M6-1.0	1.97 (50)	2.36 (60)	2.40 (61)	0.51 (13)	2"-11.5NPT	F05	11	104	360	3/8"-16 X 3.75"	3/8"-16



END CONFIGURATIONS:



PRODUCT INFORMATION:

1. END CONNECTIONS AVAILABLE IN: SCREWED (FNPT), SOCKET WELD, BUTT WELD, SCREWED x SOCKET WELD, SCREWED x BUTT WELD (SCH-40).
2. SERVICES INCLUDE: OXYGEN CLEANING, DEGREASING AND VENT/RELIEF HOLE.
3. BALL IS VENTED ON THE STEM SLOT AREA
4. ALL STAINLESS STEEL PASSIVATED
5. MANGANESE PHOSPHATE COATING ON WCB CARBON STEEL.
6. COMPLETE VALVE AUTOMATION

OPTIONS:

1. OVAL HANDLE
2. LOCKING DEVICE
3. ISO STEM EXTENSION
4. ANTI-STATIC DEVICE

APPLICABLE STANDARDS:

1. ASME B16.34: DESIGN
2. API 598: INSPECTION AND TESTING
3. API 607: FIRE SAFE
4. ISO 5211: MOUNTING
5. ANSI B1.20.1: NPT
6. ANSI B16.11: FORGED STEEL FITTINGS, SOCKET-WELDING
7. ANSI B16.25: BUTT WELD ENDS
8. CGA G-4.1: CLEANING FOR OXYGEN SERVICE
9. USP CLASS VI: CONFIRMATION OF COMPLIANCE (TFM1600 MATERIAL)

ITEM NO.	DESCRIPTION	MATERIALS	QTY.
1	BODY	A351-CF8M A216-WCB	1
2	END	A351-CF8M A216-WCB	2
3	BALL	A351-CF8M	1
4	SEAT	TFM1600	2
5	BODY SEAL	GRAFOIL	2
6	STEM	A276-316	1
7	STEM THRUST WASHER	GRAFOIL	1
8	STEM THRUST WASHER	RTFE	1
9	STEM SEAL	GRAFOIL/RTFE	3
10	GLAND FOLLOWER	304 STAINLESS STEEL	1
11	BELLEVILLE WASHER	17-7PH STAINLESS STEEL	2
12	JAM NUT	304 STAINLESS STEEL	1
13	LOCK TAB	304 STAINLESS STEEL	1
14	LEVER HANDLE	304 STAINLESS STEEL	1
15	HANDLE NUT	304 STAINLESS STEEL	1
16	STOP PIN	304 STAINLESS STEEL	1
17	BODY BOLT	304 STAINLESS STEEL	4
18	BODY NUT	304 STAINLESS STEEL	4

DRAWN BY E.P. DATE 05/01/2017
 CHECKED BY E.G. DATE 03/22/2018
 APPROVED BY J.S. DATE 03/22/2018

SVF Flow Controls
 5595 Fresca Drive • La Palma, CA 90623 • 1.800.783.7836
 www.SVF.net • Sales@SVF.net

DESCRIPTION: 1/2" - 2" F8 3-PIECE BALL VALVE, STANDARD PORT
 UNITS: INCH (MILLIMETERS) DATE: 03/22/2018 REV: C