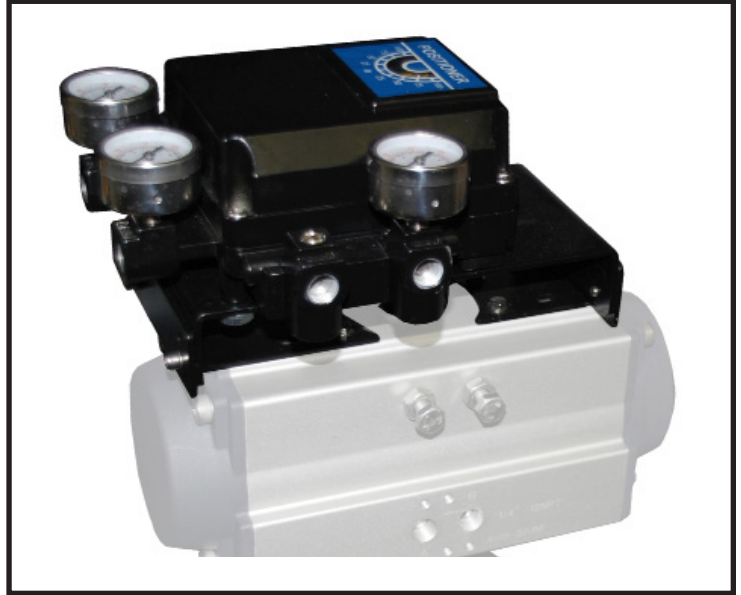


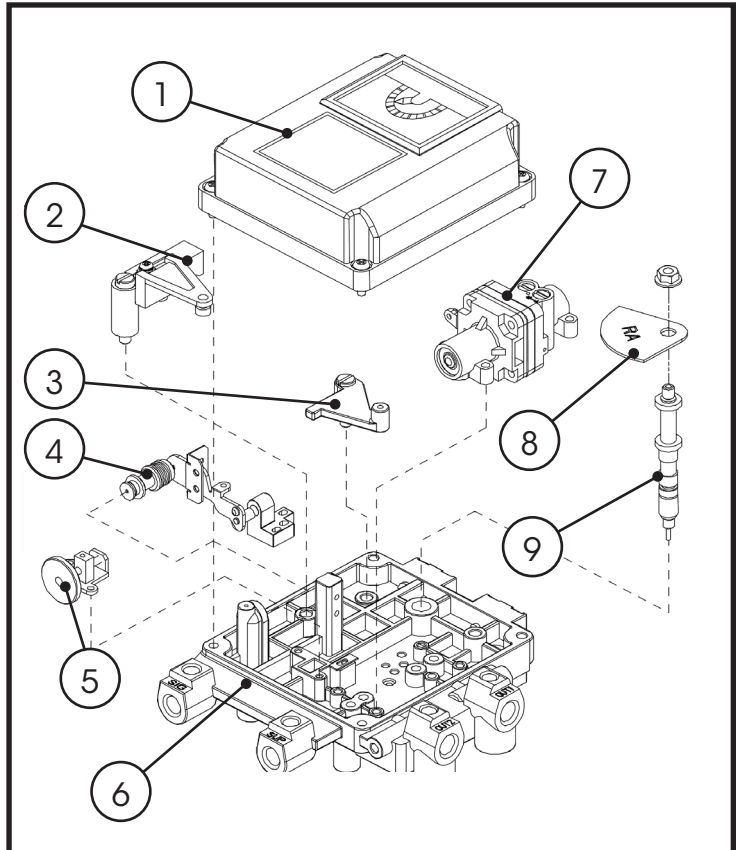
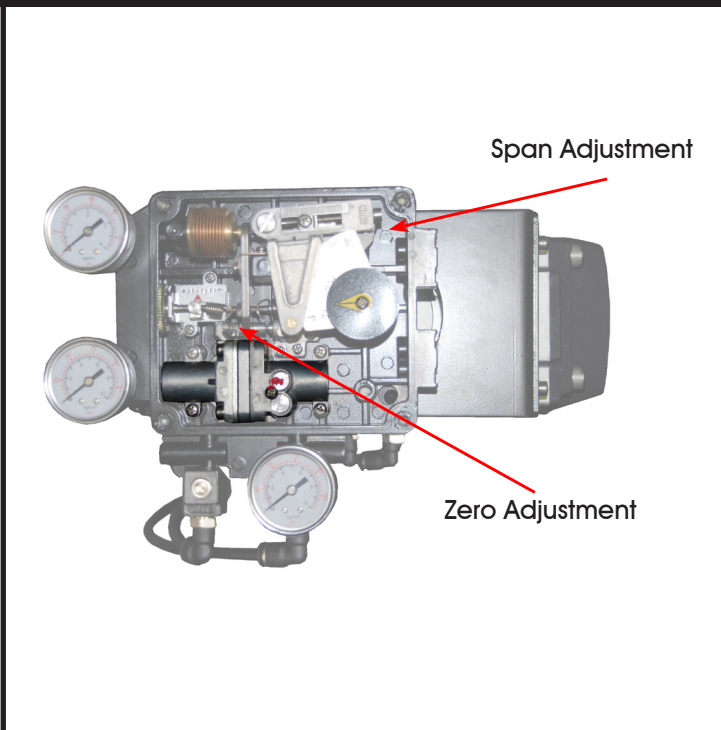
The EXACT-P3 Pneumatic Positioner controls the position of a rotary actuator and its final control element by modulating the flow of supply air to the actuator in response to a controlled input pressure of 3 to 15psi. The EXACT-P3 positioner has a NEMA 4X enclosure rating and can be installed on a Spring Return or Double Acting rotary actuator. The air consumption of the EXACT-P3 is 0.23 SCFM (at 80 psi).

## MATERIALS OF CONSTRUCTION

| ITEM # | DESCRIPTION       | MATERIAL                           |
|--------|-------------------|------------------------------------|
| 1      | Cover             | Die-cast aluminum                  |
| 2      | Span Unit         | Die-cast aluminum                  |
| 3      | Connector         | Die-cast aluminum                  |
| 4      | Bellows Mechanism | Copper bellows                     |
| 5      | Zero Unit         | Stainless Steel                    |
| 6      | Base Body         | Die-cast aluminum                  |
| 7      | Pilot Valve       | Die-cast aluminum, Stainless Steel |
| 8      | Cam               | Stainless Steel                    |
| 9      | Feedback Shaft    | Stainless Steel                    |



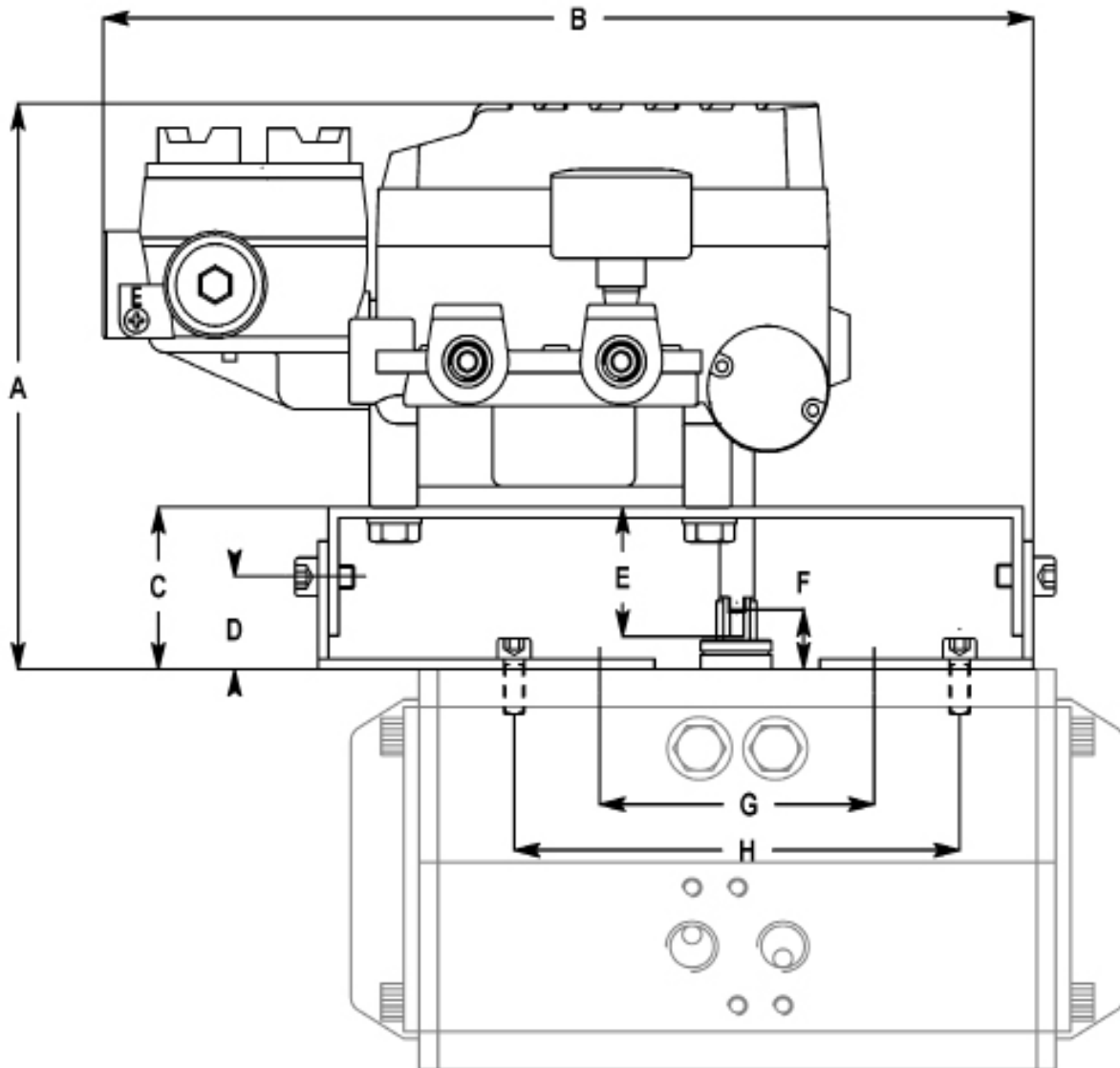
## EXACT-P3 Zero and Span Adjustment



## EXACT-P3™ DIMENSIONS (1 of 2)

| A    |       | B    |     | C    |    | D    |    | E    |    | F    |    | G    |    | H    |     |
|------|-------|------|-----|------|----|------|----|------|----|------|----|------|----|------|-----|
| in.  | mm    | in.  | mm  | in.  | mm | in.  | mm | in.  | mm | in.  | mm | in.  | mm | in.  | mm  |
| 5.06 | 128.5 | 9.33 | 237 | 1.77 | 45 | 1.04 | 26 | 1.32 | 34 | 0.79 | 20 | 3.15 | 80 | 5.12 | 130 |

\* Standard NAMUR Dimensions

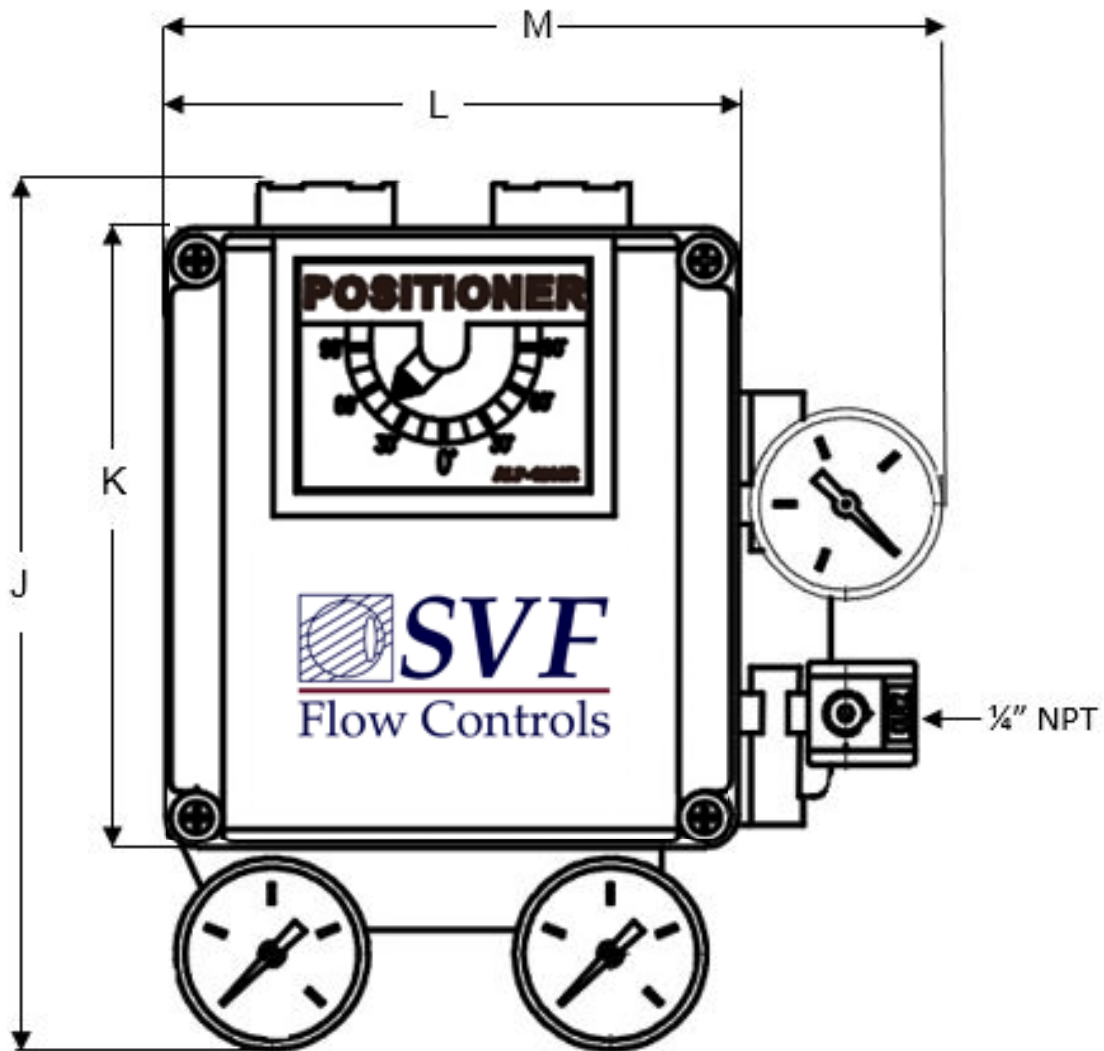


ORDER CODE PART NUMBER: EXACT-P3

## EXACT-P3™ DIMENSIONS (2 of 2)

| J    |     | K    |     | L    |     | M    |       | Air Consumption |      |
|------|-----|------|-----|------|-----|------|-------|-----------------|------|
| in.  | mm  | in.  | mm  | in.  | mm  | in.  | mm    | SLPM            | SCFM |
| 7.32 | 186 | 5.24 | 133 | 4.80 | 122 | 6.52 | 165.5 | 6.5             | 0.23 |

\* Air Consumption @ 80psi



ORDER CODE PART NUMBER: EXACT-P3