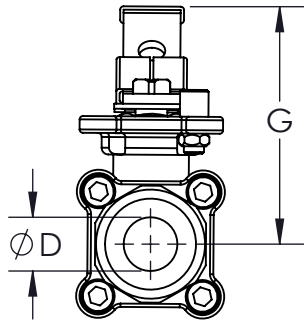


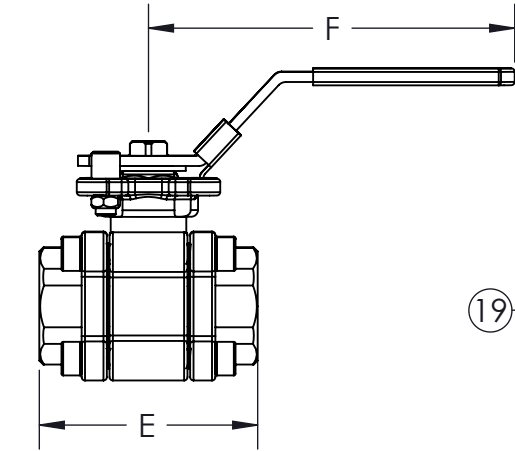
* AT FULL DIFFERENTIAL PRESSURE FOR CLEAN FLUIDS WITH TFM1600 SEATS

| SIZE | A | øD | E | F | G | J | øK1 | øK2 | øL1 | øL2 | øO1 | FNPT THREAD | ISO 5211 | WEIGHT (lbs) | Cv | TORQUE* (in-lbf) | BODY BOLT SIZE |
|--------|-----------|-----------|------------|------------|------------|-----------|----------|----------|-----------|-----------|-----------|----------------|----------|--------------|-----|------------------|----------------|
| 1/2" | 0.43 (11) | 0.63 (16) | 2.56 (65) | 4.61 (117) | 2.83 (72) | 0.35 (9) | 0.24 (6) | 0.24 (6) | 1.42 (36) | 1.65 (42) | 0.87 (22) | 1/2"-14NPT | F03-F04 | 1 | 11 | 67 | M6-1.0 X 16 |
| 3/4" | 0.55 (14) | 0.79 (20) | 2.95 (75) | 5.00 (127) | 3.11 (79) | 0.43 (11) | 0.24 (6) | 0.24 (6) | 1.42 (36) | 1.65 (42) | 1.06 (27) | 3/4"-14NPT | F03-F04 | 2 | 21 | 104 | M8-1.25 X 20 |
| 1" | 0.47 (12) | 0.98 (25) | 3.35 (85) | 6.69 (170) | 3.35 (85) | 0.43 (11) | 0.24 (6) | 0.28 (7) | 1.65 (42) | 1.97 (50) | 1.34 (34) | 1"-11.5NPT | F04-F05 | 3 | 34 | 122 | M8-1.25 X 20 |
| 1-1/2" | 0.63 (16) | 1.50 (38) | 4.33 (110) | 7.17 (182) | 4.13 (105) | 0.55 (14) | 0.28 (7) | 0.35 (9) | 1.97 (50) | 2.76 (70) | 1.97 (50) | 1-1/2"-11.5NPT | F05-F07 | 8 | 80 | 213 | M10-1.5 X 30 |
| 2" | 0.63 (16) | 1.97 (50) | 5.12 (130) | 7.17 (182) | 4.49 (114) | 0.55 (14) | 0.28 (7) | 0.35 (9) | 1.97 (50) | 2.76 (70) | 2.44 (62) | 2"-11.5NPT | F05-F07 | 15 | 148 | 305 | M12-1.75 X 40 |

1



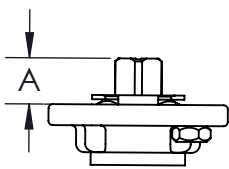
2



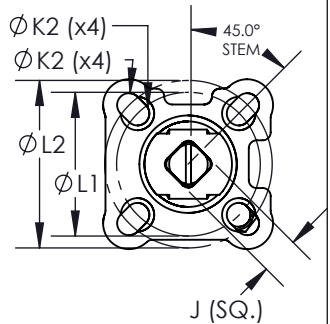
3

4

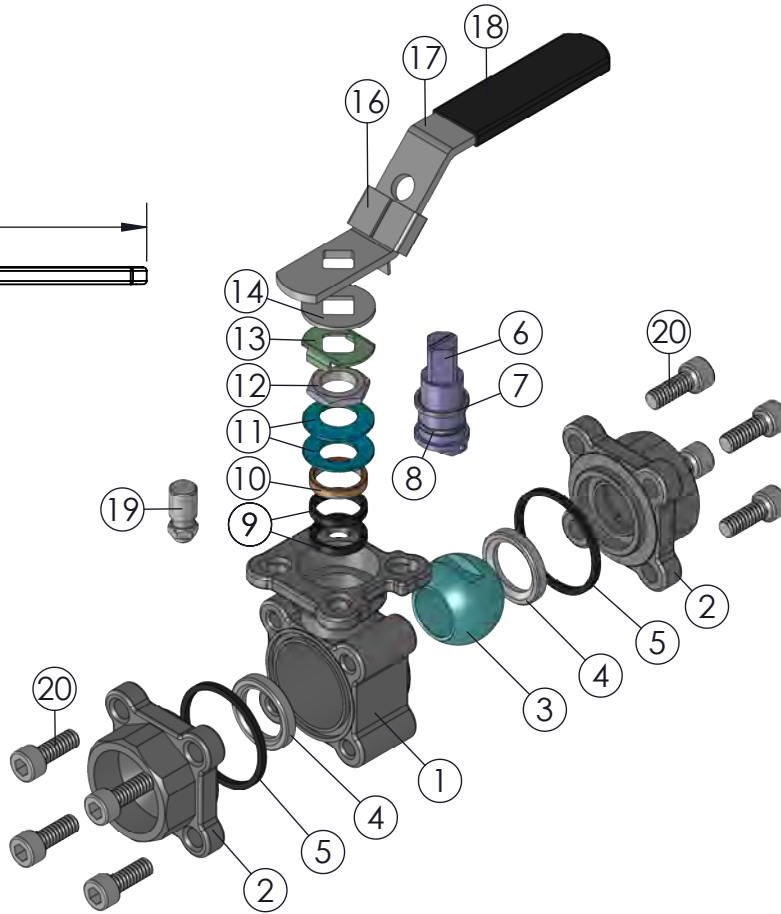
TOPWORKS



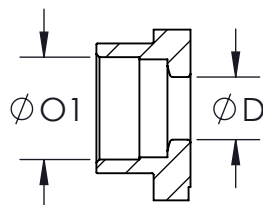
5



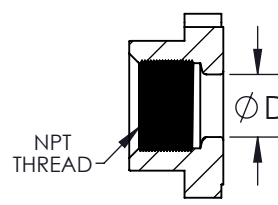
6



END CONFIGURATIONS:



SOCKET WELD END



SCREWED END

PRODUCT INFORMATION:

1. END CONNECTIONS AVAILABLE IN: SCREWED (FNPT), SOCKET WELD
2. SERVICES INCLUDE: OXYGEN CLEANING, DEGREASING, VENT/RELIEF HOLE
3. BALL IS VENTED ON THE STEM SLOT AREA
4. ANTI-STATIC DEVICE
5. STANDARD LOCKING HANDLE
6. ENCAPSULATED BODY SEALS
7. BLOW OUT PROOF STEM
8. ALL STAINLESS STEEL PASSIVATED
9. COMPLETE DIRECT MOUNT VALVE AUTOMATION

APPLICABLE STANDARDS:

1. ASME B16.34: DESIGN
2. API 598: INSPECTION AND TESTING
3. ISO 5211: MOUNTING
4. ANSI B1.20.1: NPT
5. ANSI B16.11: FORGED STEEL FITTINGS, SOCKET-WELDING
7. USP CLASS VI: CONFIRMATION OF COMPLIANCE (TFM1600/PTFE MATERIAL)
8. ANSI CLASS 600 RATING APPLIES TO 1/2" - 2" B9 VALVES WITH TFM1600 SEATS

| ITEM NO. | DESCRIPTION | MATERIALS | QTY. |
|----------|--------------------|---------------------|------|
| 1 | BODY | A351-CF8M A216-WCB | 1 |
| 2 | END | A351-CF3M A216-WCB | 2 |
| 3 | BALL | A351-CF8M | 1 |
| 4 | SEAT | TFM1600 DELRIN PEEK | 2 |
| 5 | BODY SEAL | PTFE BUNA GRAFOIL | 2 |
| 6 | STEM | AISI-316 | 1 |
| 7 | STEM THRUST WASHER | TF4215 | 1 |
| 8 | O-RING | VITON | 1 |
| 9 | STEM SEAL | TF4215 | 2 |
| 10 | GLAND FOLLOWER | 304 STAINLESS STEEL | 1 |
| 11 | BELLEVILLE WASHER | 301 STAINLESS STEEL | 2 |
| 12 | JAM NUT | 304 STAINLESS STEEL | 1 |
| 13 | LOCK TAB | 304 STAINLESS STEEL | 1 |
| 14 | SPACER | 304 STAINLESS STEEL | 1 |
| 15 | HANDLE NUT | 304 STAINLESS STEEL | 1 |
| 16 | LOCKING DEVICE | 316 STAINLESS STEEL | 1 |
| 17 | LEVER HANDLE | 304 STAINLESS STEEL | 1 |
| 18 | HANDLE SLEEVE | PVC | 1 |
| 19 | STOP PIN | 304 STAINLESS STEEL | 1 |
| 20 | BODY BOLT | 304 STAINLESS STEEL | 8 |

DRAWN BY C.L.
 CHECKED BY E.P.
 APPROVED BY J.S.
(FOR REF. ONLY IF NOT APPROVED)

DATE 11/20/2017
 DATE 01/18/2019
 DATE 01/08/2019

SVF Flow Controls
 5595 Fresca Drive • La Palma, CA 90623 • 1.800.783.7836
 www.SVF.net • Sales@SVF.net

DESCRIPTION:
 1/2" - 2" B9 3-PIECE BALL VALVE, FULL PORT

UNITS: INCH (MILLIMETERS) DATE: 01/08/2019 REV: C

A B C D E F G