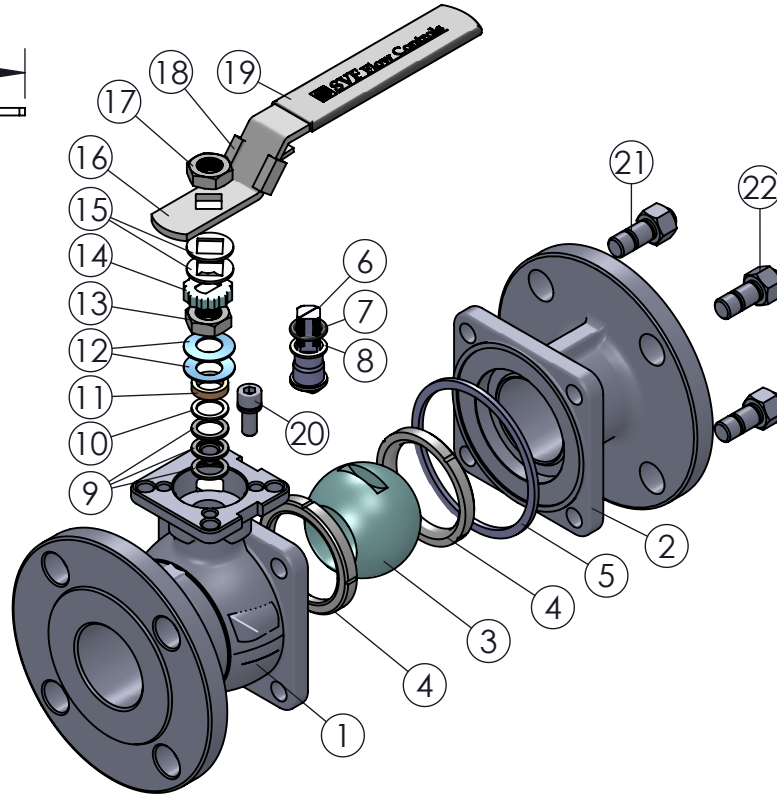
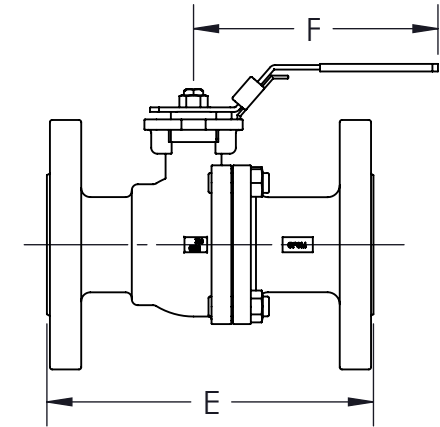
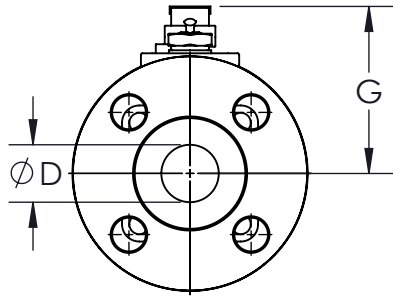


*AT FULL DIFFERENTIAL PRESSURE (CONSULT OUR ENGINEERING DEPARTMENT FOR TORQUES ON 6" AND 8" TRUNNION DESIGN VALVES)

SIZE	A	øD	E	F	G	J	øK1	øK2	øL1	øL2	ISO 5211	WEIGHT (lbs)	Cv	TORQUE* (in-lbf) TFM1600	TORQUE* (in-lbf) SUPRALON
1/2"	0.36 (9)	0.59 (15)	5.50 (140)	5.30 (135)	3.10 (79)	0.35 (9)	0.24 (6)	0.24 (6)	1.42 (36)	1.65 (42)	F03-F04	5	11	63	90
3/4"	0.49 (12)	0.79 (20)	6.00 (152)	5.30 (135)	3.50 (89)	0.35 (9)	0.24 (6)	0.24 (6)	1.42 (36)	1.65 (42)	F03-F04	8	26	76	109
1"	0.57 (14)	0.98 (25)	6.50 (165)	6.70 (170)	3.70 (95)	0.43 (11)	0.24 (6)	0.28 (7)	1.65 (42)	1.97 (50)	F04-F05	10	42	139	199
1-1/2"	0.70 (18)	1.50 (38)	7.50 (190)	7.90 (200)	4.30 (110)	0.55 (14)	0.28 (7)	0.35 (9)	1.97 (50)	2.76 (70)	F05-F07	19	120	303	433
2"	0.59 (15)	1.97 (50)	8.50 (216)	7.90 (200)	4.50 (115)	0.55 (14)	0.28 (7)	0.35 (9)	1.97 (50)	2.76 (70)	F05-F07	24	190	443	633
2-1/2"	0.67 (17)	2.48 (63)	9.50 (241)	11.80 (300)	5.90 (150)	0.67 (17)	0.35 (9)	0.43 (11)	2.76 (70)	4.02 (102)	F07-F10	40	450	683	976
3"	0.67 (17)	2.99 (76)	11.10 (282)	15.80 (400)	6.90 (176)	0.67 (17)	0.35 (9)	0.43 (11)	2.76 (70)	4.02 (102)	F07-F10	58	600	1138	1626
4"	0.82 (21)	3.94 (100)	12.00 (305)	15.80 (400)	8.00 (204)	0.87 (22)	N/A	0.43 (11)	N/A	4.02 (102)	F10	92	1650	1708	2440
6"	1.12 (28)	5.91 (150)	15.87 (403)	31.50 (800)	10.85 (275)	1.06 (27)	0.55 (14)	N/A	4.92 (125)	N/A	F12	215	2600	4690	6097
8"	1.12 (28)	7.87 (200)	19.76 (502)	31.50 (800)	12.90 (328)	1.06 (27)	0.55 (14)	N/A	4.92 (125)	N/A	F12	277	4200	6726	8743



PRODUCT INFORMATION:

- LIVE-LOADED STEM PACKING
- STANDARD LOCKING HANDLE
- ANTI-STATIC DEVICE
- BALL IS VENTED ON THE STEM SLOT AREA
- SIZES 6" AND 8" ARE ALSO AVAILABLE IN TRUNNION DESIGN (SERIES B42T)
- COMPLETE VALVE AUTOMATION

OPTIONS:

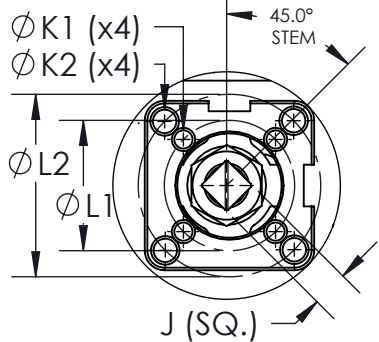
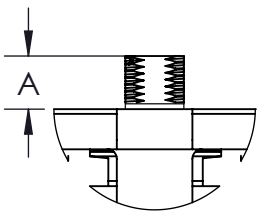
- ISO STEM EXTENSION
- STEAM JACKET

APPLICABLE STANDARDS:

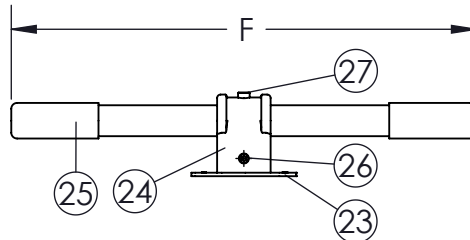
- NACE MR0175
- ASME B16.34: DESIGN AND WALL THICKNESS
- ASME B16.10: FACE TO FACE
- ASME B16.5: END FLANGE
- API 598: INSPECTION AND TESTING
- API 607: FIRE SAFE (WITH GRAFOIL BODY SEALS ONLY)
- ISO 5211: MOUNTING
- USP CLASS VI: CONFIRMATION OF COMPLIANCE (TFM1600/PTFE MATERIAL)

ITEM NO.	DESCRIPTION	MATERIALS	QTY.
1	BODY	A351-CF8M A216-WCB	1
2	END	A351-CF8M A216-WCB	1
3	BALL	A351-CF8M	1
4	SEAT	TFM1600 SUPRALON	2
5	BODY SEAL	GRAFOIL PTFE	1
6	STEM	A276-316	1
7	O-RING	VITON	1
8	STEM THRUST WASHER	SUPRALON	1
9	STEM SEAL	GRAFOIL PTFE	3
10	BUSHING	304 STAINLESS STEEL	1
11	GLAND FOLLOWER	316 STAINLESS STEEL	1
12	BELLEVILLE WASHER	301 STAINLESS STEEL	2
13	STEM NUT	A194-8	1
14	TAB LOCK	304 STAINLESS STEEL	1
15	HANDLE GLAND	304 STAINLESS STEEL	2
16	HANDLE (SIZES 1/2" - 2-1/2")	304 STAINLESS STEEL	1
17	HANDLE NUT	A194-8	1
18	LOCKING DEVICE (SIZES 1/2" - 2-1/2")	304 STAINLESS STEEL	1
19	HANDLE SLEEVE	PVC	1
20	STOP PIN	A193-B8	1
21	BODY BOLT	A193-B8	4
22	BODY NUT	A194-8	4
23	TRIANGULAR STOPPER (SIZES 3" - 8")	304 STAINLESS STEEL	1
24	PIPE HANDLE ADAPTER (SIZES 3" - 8")	A351-CF8	1
25	PIPE HANDLE (SIZES 3" - 8")	304 STAINLESS STEEL	1
26	PIPE HANDLE SET SCREW (SIZES 3" - 8")	A193-B8	1
27	ADAPTER SET SCREW (SIZES 3" - 8")	A193-B8	1

TOPWORKS:



SIZES 3" - 8" WITH PIPE HANDLE:



DRAWN BY E.P. DATE 07/07/2017
 CHECKED BY E.G. DATE 10/27/2017
 APPROVED BY J.S. DATE 10/27/2017

PROJECTION THIRD ANGLE

SVF Flow Controls
 5595 Fresca Drive • La Palma, CA 90623 • 1.800.783.7836
 www.SVF.net • Sales@SVF.net

DESCRIPTION: 1/2" - 8" B42C FLANGED BALL VALVE, ANSI CLASS 300, FULL PORT

UNITS: INCH (MILLIMETERS) DATE: 10/27/2017 REV: B