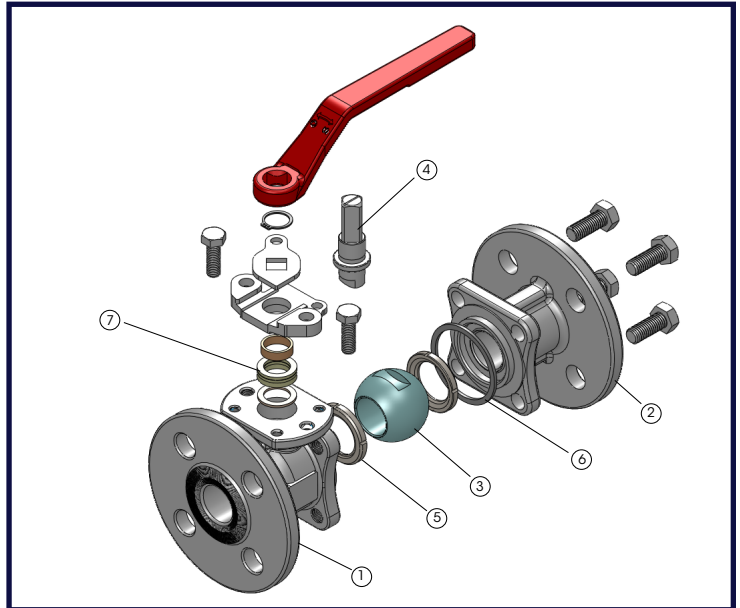


The SVF Series B40 Flanged Ball Valves are designed for general purpose performance in a wide variety of utility applications. The B40 is an economical valve that meets industry requirements for performance and dependability.

SERIES B40 DESIGN FEATURES

- ✓ Designed and built for economical performance
- ✓ Full port for maximum flow
- ✓ Chevron (V-Ring) stem seals (#7) assures low friction and leak tight performance
- ✓ Lockable in the open and closed position
- ✓ Blowout proof stem adds safety & reliability
- ✓ Standard seat material is RTFE



MATERIALS OF CONSTRUCTION

ITEM	DESCRIPTION	MATERIALS SPECIFICATIONS (Additional options available)
1	Body	316 Stainless Steel (ASTM A351-CF8M), Carbon Steel (ASTM A216-WCB)
2	End Cap	316 Stainless Steel (ASTM A351-CF8M), Carbon Steel (ASTM A216-WCB)
3	Ball	316 Stainless Steel (ASTM A351-CF8M)
4	Stem	SUS304 (Carbon Steel valves) SUS316 (Stainless Steel valves)
5	Seat	RTFE
6	Body Seal	RTFE
7	Stem Seal	RTFE

SPECIFICATION STANDARDS OF COMPLIANCE

- Design - ASME B16.34, NACE MR 0175
- Face to Face: ASME B16.10
- End Flange: ASME B16.5
- Wall Thickness: ASME B16.34
- Inspection & Testing: API 598

What do you need today?™

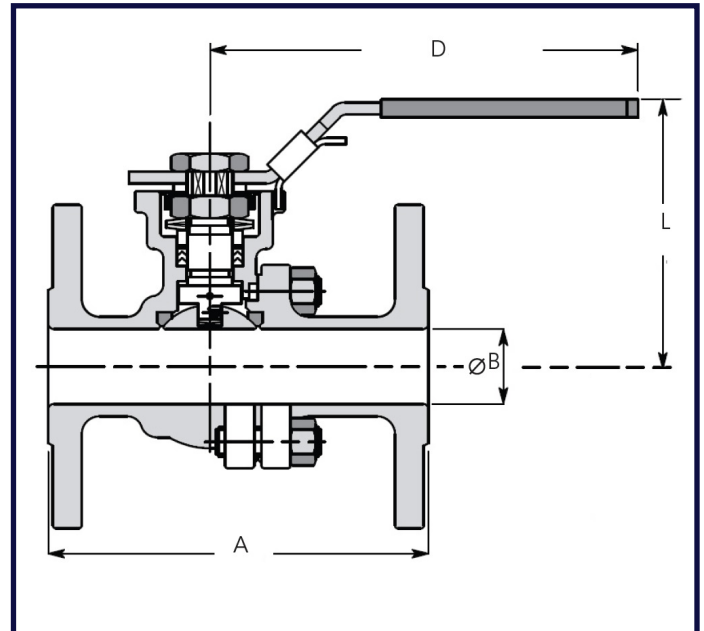
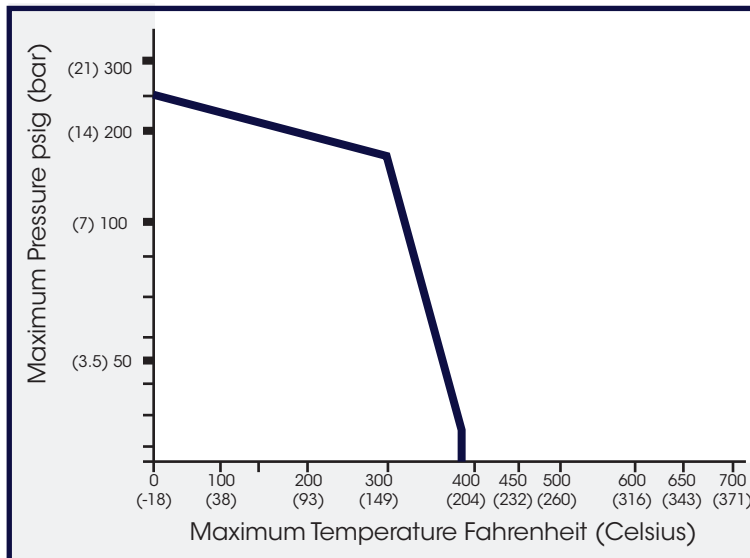
HIGH PURITY VALVES
CleanFLOW

PRO-SPEC
PROCESS SPECIFIC

**QUALITY FLOWS
THROUGH US**

DIMENSIONS, WEIGHT, CV, TORQUE

Size	A		B		D		L		Weight		Cv	Torque	
	in.	mm	in.	mm	in.	mm	in.	mm	lbs	kg		in-lbf	Nm
1"	5.00	127	0.98	25	6.30	160	3.03	77	6.22	2.8	85	195	22
1-1/2"	6.50	165	1.58	40	7.33	186	4.10	104	12.94	5.9	200	257	29
2"	7.01	178	1.97	50	7.33	186	4.49	114	19.229	8.7	320	301	34
2-1/2"	7.49	190	2.56	65	12.77	324	5.59	142	28.88	13.1	450	443	50
3"	8.00	203	3.15	80	12.77	324	6.03	153	39.02	17.7	600	664	75
4"	9.02	229	3.94	100	12.77	324	6.54	166	62.39	28.3	1650	885	100
6"	15.52	394	5.91	150	29.55	751	9.73	247	144.84	65.7	2600	2390	270

B40 PRESSURE/TEMPERATURE CHART

HOW TO ORDER SERIES B40 BALL VALVES

B40 Stainless Steel	
1"	B4020SSFL05D
1-1/2"	B4020SSFL07D
2"	B4020SSFL08D
2-1/2"	B4020SSFL09D
3"	B4020SSFL10D
4"	B4020SSFL11D
6"	B4020SSFL13D

B40 Carbon Steel	
1"	B4020CSFL05D
1-1/2"	B4020CSFL07D
2"	B4020CSFL08D
2-1/2"	B4020CSFL09D
3"	B4020CSFL10D
4"	B4020CSFL11D
6"	B4020CSFL13D