

\*AT FULL DIFFERENTIAL PRESSURE

SIZE	A	øB	C	øD	E	F	G	J1	J2	K	øL	ISO 5211	WEIGHT (lbs)	Cv	TORQUE* (in-lbf) TFM1600 SUPRALON	
1-1/2"	0.65 (16)	1.24 (31)	1.26 (32)	1.26 (32)	6.50 (165)	7.87 (200)	4.13 (105)	0.38 (10)	0.62 (15)	M8-1.25	2.76 (70)	F07	10	130	218	312
2"	0.65 (16)	1.24 (31)	1.26 (32)	1.50 (38)	7.00 (178)	7.87 (200)	4.49 (114)	0.38 (10)	0.62 (15)	M8-1.25	2.76 (70)	F07	15	200	315	450
3"	0.87 (22)	1.78 (45)	1.67 (42)	2.37 (60)	8.00 (203)	11.81 (300)	5.59 (142)	0.63 (16)	0.87 (22)	M10-1.5	4.02 (102)	F10	31	450	696	995
4"	1.14 (29)	2.26 (57)	2.17 (55)	2.99 (76)	9.00 (229)	15.75 (400)	7.66 (195)	0.71 (18)	1.12 (28)	M10-1.5	4.02 (102)	F10	48	600	1136	1623
6"	0.90 (23)	2.74 (69)	2.44 (62)	3.94 (100)	10.50 (267)	15.75 (400)	9.50 (241)	1.06 (27)	1.06 (27)	M10-1.5	4.02 (102)	F10	100	1100	1972	2818

**PRODUCT INFORMATION:**

- LIVE-LOADED STEM PACKING
- STANDARD LOCKING HANDLE
- ANTI-STATIC DEVICE
- BALL IS VENTED ON THE STEM SLOT AREA
- COMPLETE VALVE AUTOMATION

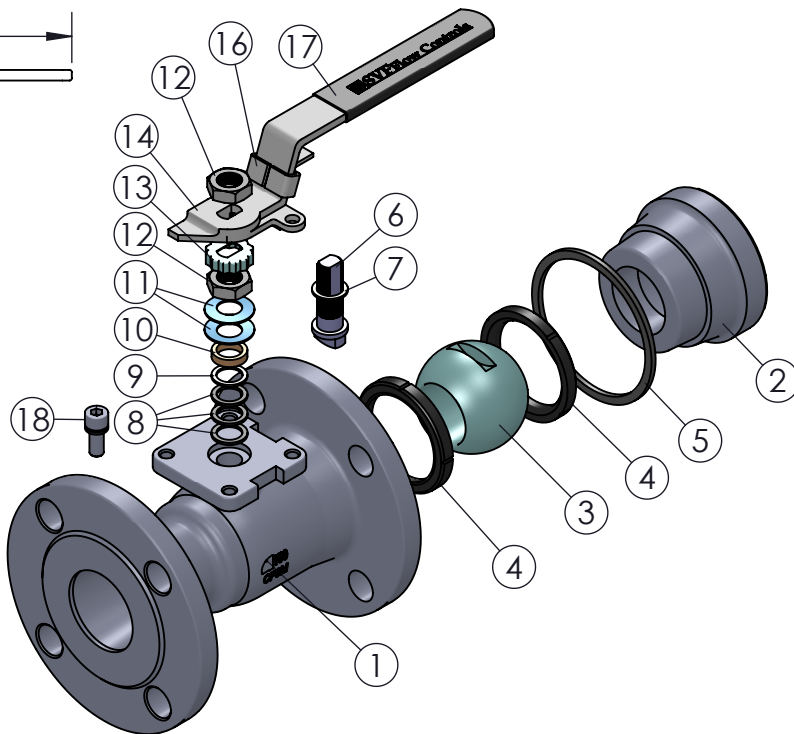
**OPTIONS:**

- ISO STEM EXTENSION
- STEAM JACKET

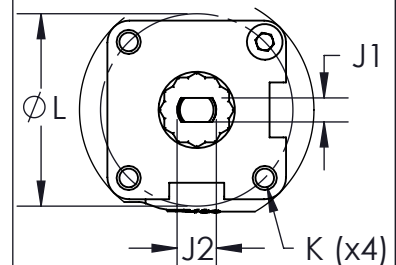
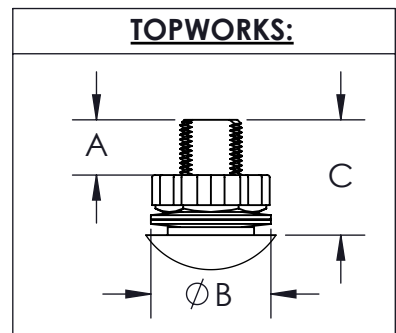
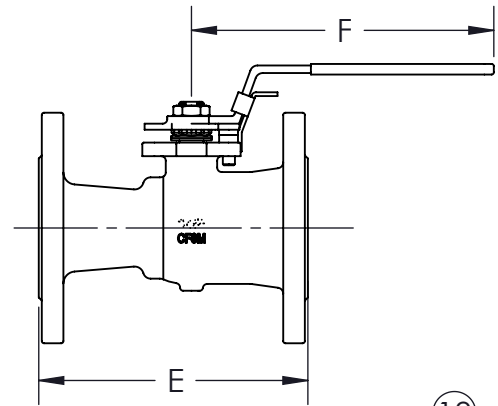
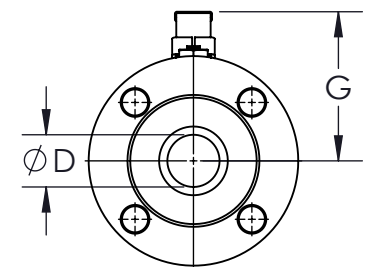
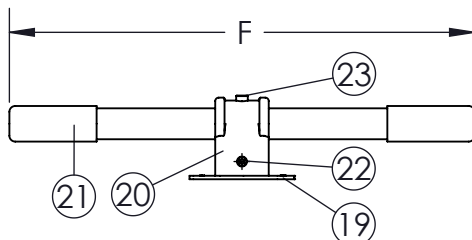
**APPLICABLE STANDARDS:**

- NACE MR 0175
- ASME B16.34: DESIGN AND WALL THICKNESS
- ASME B16.10: FACE TO FACE
- ASME B16.5: END FLANGE
- API 598: INSPECTION AND TESTING
- API 607: FIRE SAFE (WITH GRAFOIL BODY SEALS ONLY)
- ISO 5211: MOUNTING
- USP CLASS VI: CONFIRMATION OF COMPLIANCE (TFM1600/PTFE MATERIAL)

ITEM NO.	DESCRIPTION	MATERIALS	QTY.
1	BODY	A351-CF8M A216-WCB	1
2	END CAP	A351-CF8M A216-WCB	1
3	BALL	A351-CF8M	1
4	SEAT	TFM1600 SUPRALON	2
5	BODY SEAL	GRAFOIL PTFE	1
6	STEM	A276-316	1
7	STEM THRUST WASHER	SUPRALON TFM1600	1
8	STEM SEAL	GRAFOIL PTFE	3
9	BUSHING	304 STAINLESS STEEL	1
10	GLAND FOLLOWER	316 STAINLESS STEEL	1
11	BELLEVILLE WASHER	301 STAINLESS STEEL	2
12	STEM NUT	304 STAINLESS STEEL	1
13	TAB LOCK	304 STAINLESS STEEL	1
14	HANDLE (SIZES 1-1/2" - 2")	A351-CF8M	1
15	HANDLE NUT	304 STAINLESS STEEL	1
16	LOCKING DEVICE (SIZES 1-1/2" - 2")	304 STAINLESS STEEL	1
17	HANDLE SLEEVE	PVC	1
18	STOP PIN	A193-B8	1
19	TRIANGULAR STOPPER (SIZES 3" - 6")	304 STAINLESS STEEL	1
20	PIPE HANDLE ADAPTER (SIZES 3" - 6")	A351-CF8M	1
21	PIPE HANDLE (SIZES 3" - 6")	304 STAINLESS STEEL	1
22	PIPE HANDLE SET SCREW (SIZES 3" - 6")	A193-B8	1
23	ADAPTER SET SCREW (SIZES 3" - 6")	A193-B8	1



**SIZES 3" - 6" WITH PIPE HANDLE:**



DRAWN BY E.P. DATE 06/28/2017  
 CHECKED BY E.G. DATE 10/27/2017  
 APPROVED BY J.S. DATE 10/27/2017

(FOR REF ONLY IF NOT APPROVED)  
 THE INFORMATION CONTAINED IN THIS DRAWING IS THE SOLE PROPERTY OF SVF FLOW CONTROLS, INC. ANY REPRODUCTION IN PART OR IN WHOLE WITHOUT THE WRITTEN CONSENT OF SVF FLOW CONTROLS, INC. IS PROHIBITED.



**SVF Flow Controls**

5595 Fresca Drive • La Palma, CA 90623 • 1.800.783.7836  
 www.SVF.net • Sales@SVF.net

DESCRIPTION:  
 1-1/2" - 6" 41C FLANGED BALL VALVE, ANSI CLASS 150, STANDARD PORT

UNITS: INCH (MILLIMETERS) DATE: 10/27/2017 REV: B